

标准与规范 Standard and Specification



设计标准 Design standard	GOST 5762-2002
结构长度 Face to face	GOST 3706-93
法兰连接 Flanges connection	GOST 12815-80
对焊端连接 Welding connection	GB/T 12224
试验与检验 Testing standard	ISO5208 GOST 356-80
压力-温度等级 Pressure-Temp	GB/T 12224

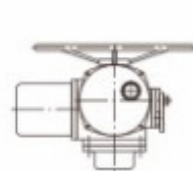
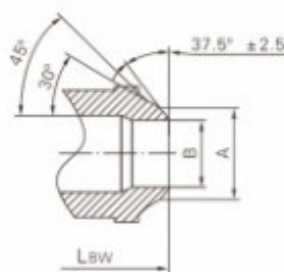
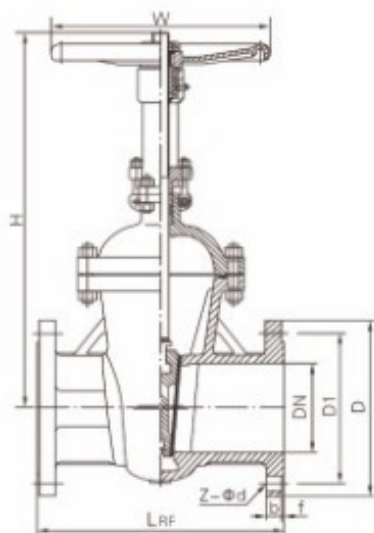
性能规范 Performance specification

PN 公称压力 (MPa)	Shell test 壳体试验 (MPa)	Seal test 密封试验 (MPa)	Top seal test 上密封 (MPa)	Air seal test 气密封试验 (MPa)
1.6	2.4	1.76	1.76	0.6
2.5	3.8	2.75	2.75	
4.0	6.0	4.4	4.4	
6.3	9.5	6.9	6.9	
10.0	15.0	11.0	11.0	
16.0	24.0	17.6	17.6	
20.0	30.0	22.0	22.0	



主要零件材料及性能 Main part materials and property

体、盖、瓣 Body Bonnet	阀杆 Stem	密封面 Seat	垫片(环) Sealing shim	填料 Packing	工作温度(°C) Working temperature	适用介质 Suitable medium	
Z5L	ZG13	13Cr	304+Flexible	Flexible	-196°C -565°C	Water Steam	
Z0GL			Graphite				
Lc1		STELLITE	316+Flexible	Graphite		PTFE	Oil Gas
CF8		F304					
L2G18N9Ti		F316	Graphite	08 Soft Steel		Nitric acid Acetic acid	
CF8M		F316					
0G18N12Mo2Ti							



Electric actuator



Gear box

主要外形连接尺寸 Main external and connection dimension(PN16)

DN	L _{RF}	L _{SW}	D	D ₁	b	Z-φd	A	B	H	W
50	180	180	160	125	16	4-φ18	60	52	355	200
65	190	190	180	145	20	4-φ18	75	63	376	200
80	210	210	195	160	20	8-φ18	91	78	435	280
100	230	230	215	180	20	8-φ18	117	102	502	300
125	255	255	245	210	22	8-φ18	144	128	615	320
150	280	280	280	240	22	8-φ22	172	154	675	360
200	330	330	335	295	24	12-φ22	223	203	820	400
250	450	450	405	355	26	12-φ26	278	255	970	450
300	500	500	460	410	28	12-φ26	329	305	1145	500
350	550	550	520	470	30	16-φ26	362	337	1280	550
400	600	600	580	525	32	16-φ30	413	387	1451	600
450	650	650	640	585	40	20-φ30	464	438	1545	650
500	700	700	710	650	44	20-φ33	516	489	1678	700
600	800	800	840	710	54	20-φ36	619	591	1875	800
700	900	900	910	840	40	24-φ36	721	695	2085	900
800	1000	1000	1020	950	42	24-φ39	825	797	2405	950
900	1100	1100	1125	1050	44	28-φ39	927	899	2950	1000
1000	1242	1242	1255	1170	46	28-φ42	-	-	3244	1000

主要外形连接尺寸 Main external and connection dimension(PN25)

DN	L	D	D ₁	b	Z-φd	A	B	H	W
50	250	160	125	20	4-φ18	60	52	355	200
65	265	180	145	22	8-φ18	75	63	376	200
80	280	195	160	24	8-φ18	91	78	435	280
100	300	230	190	24	8-φ22	117	102	502	300
125	325	270	220	26	8-φ26	144	128	615	320
150	350	300	250	30	8-φ26	172	154	675	360
200	400	360	310	34	12-φ26	223	203	820	400
250	450	425	370	36	12-φ30	278	255	970	450
300	500	485	430	36	16-φ30	329	305	1145	500
350	550	550	490	38	16-φ33	362	337	1280	550
400	600	610	550	40	16-φ36	413	387	1451	600
450	650	670	600	46	20-φ36	464	438	1545	650
500	700	730	660	48	20-φ36	516	489	1678	700
600	800	840	770	58	20-φ39	619	591	1875	800
700	900	960	875	50	24-φ42	721	695	2085	900
800	1000	1085	990	54	24-φ48	825	797	2405	950
900	1100	1185	1090	58	28-φ48	927	899	2950	1000
1000	1242	1320	1210	62	28-φ55	-	-	3244	1000